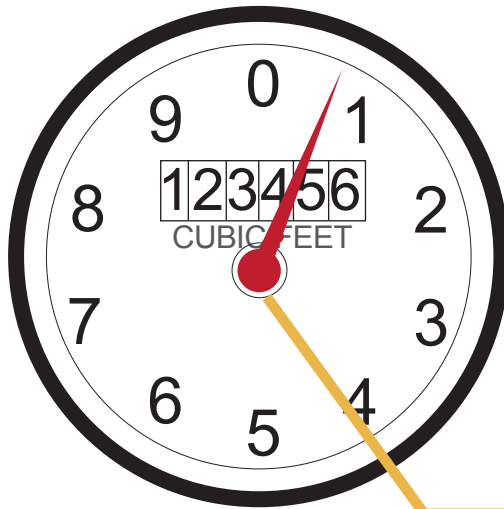


# How to Read Your Water Meter

## Reading your water meter is EASY!

Use the following directions to gauge your water usage:

- Meters record in cubic feet (ccf)
- Central Arkansas Water bills in hundred cubic feet.
- 100 cubic feet = 748 gallons of water
- 1 unit of consumption = 100 cubic feet



### EXAMPLE:

**123456**

Sample reading that will show on your bill = **1234\***

\* Central Arkansas Water bills in hundred cubic feet. The last two digits on the right are not in the monthly bill calculation.

Water Meter Register Dial

One Revolution = One (1) Cubic Foot

- Your billing statement shows the previous and current meter readings; the difference is the Consumption for the month of service.

The following line item at the top of your monthly bill shows your Previous Meter Reading, Present Meter Reading, and Consumption for the month:

METER READINGS				CONSUMPTION	DESCRIPTION
PREVIOUS	READ CODE	PRESENT	READ CODE	100 CUBIC FEET	
1226		1234*		8	WATER



**CENTRAL  
ARKANSAS  
WATER**

Depend on us - today and tomorrow.  
**ESSENTIAL & EXCEPTIONAL**

221 East Capitol Avenue • P.O. Box 1789 • Little Rock, AR 72203  
Customer Service 501.372.5161 • Emergencies 501.377.1239 • www.carkw.com